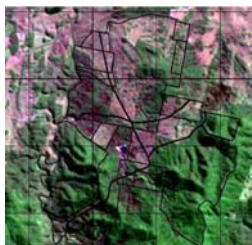


Environmental Research &  
Information Consortium Pty Ltd  
(ABN) ACN (81) 055 194 771  
Ph 02 4842 8182  
Ph 02 6161 3716  
Fax 02 4842 8183  
info@eric.com.au  
www.eric.com.au

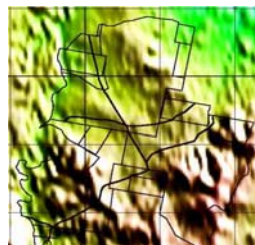
## Ground Water Bore Location Products

Sites prospective for groundwater bore location are identified geophysical and land data processed to highlight the appropriate information. The most prospective sites are identified and accurately located through ground inspection.

### Reference information (data sources)



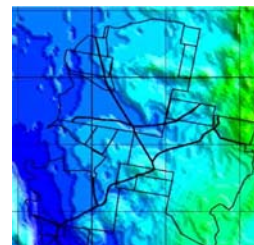
Landcover



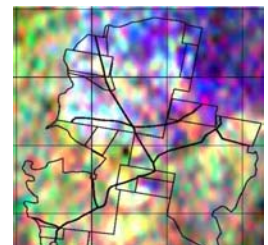
Elevation



Geology

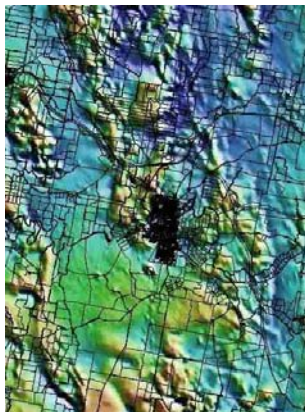


Magnetics

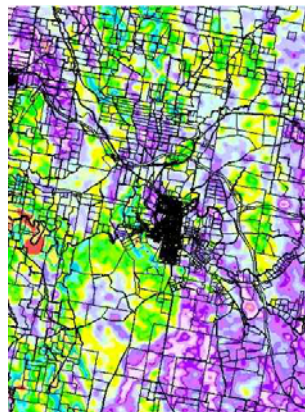


Radiometrics

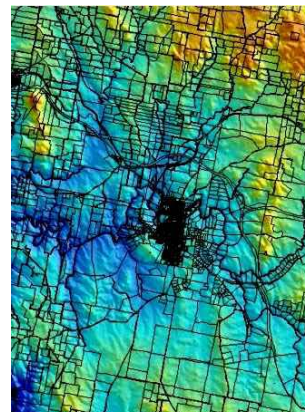
### Example processing (region and local)



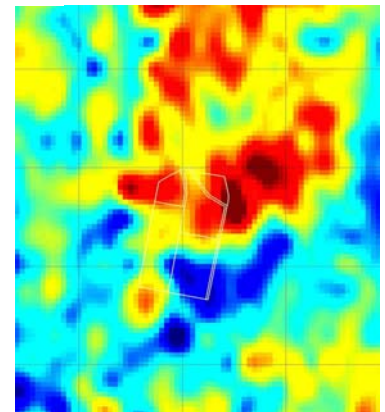
Magnetics  
enhanced



Radiometrics  
classified



Elevation  
enhanced



Radiometrics  
enhanced TC



The processing highlights structural features such as lineaments that indicate fractures. Such fractures provide pathways for the flow of water. Only the main lineaments are identified.