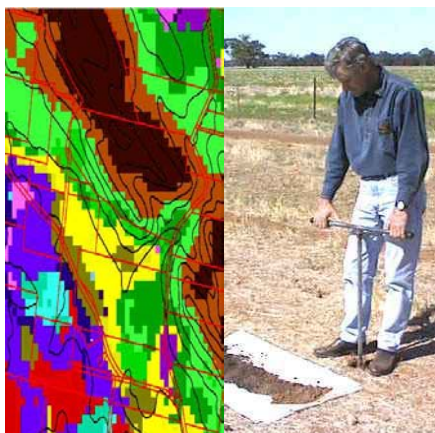


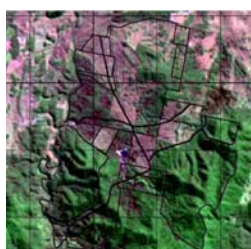
Environmental Research &
Information Consortium Pty Ltd
(ABN) ACN (81) 055 194 771
Ph 02 4842 8182
Ph 02 6161 3716
Fax 02 4842 8183
info@eric.com.au
www.eric.com.au

Products for Individual Landholdings

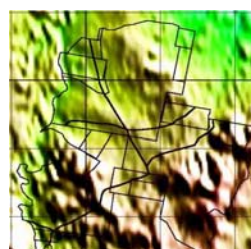
Reference information



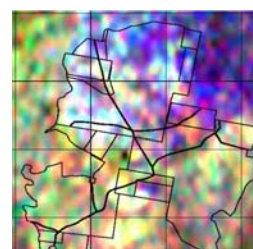
Soil classes mapped from
airborne radiometrics.
Soil properties determined
through field sampling and
laboratory analysis.



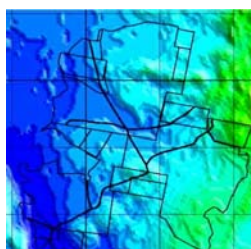
Landcover



Elevation



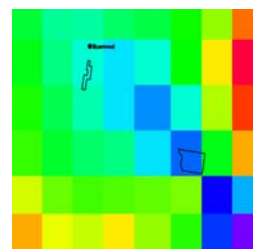
Radiometrics



Magnetics

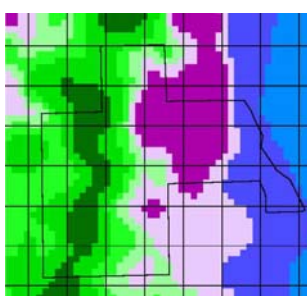


Geology

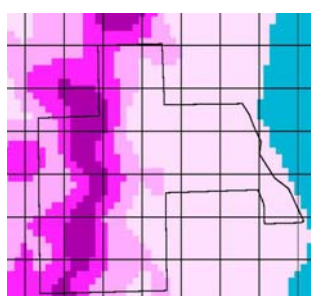


Climate

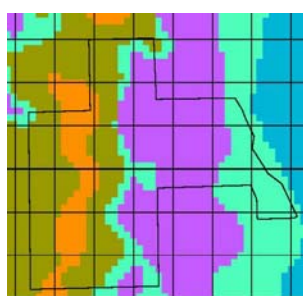
Core soil properties for A and B horizons



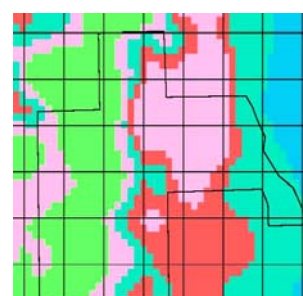
Soil classes



Texture



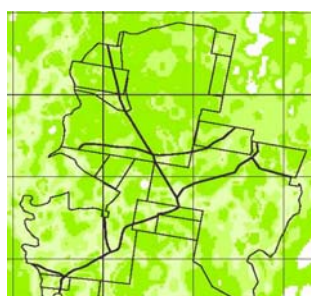
pH



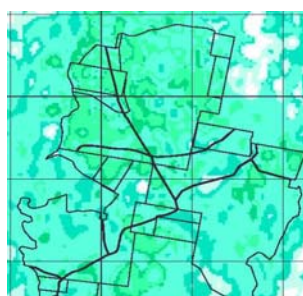
EC (salinity)



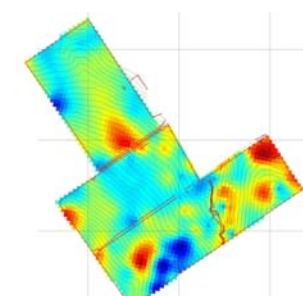
Depth



Redox (pe)



Dispersibility



Water holding